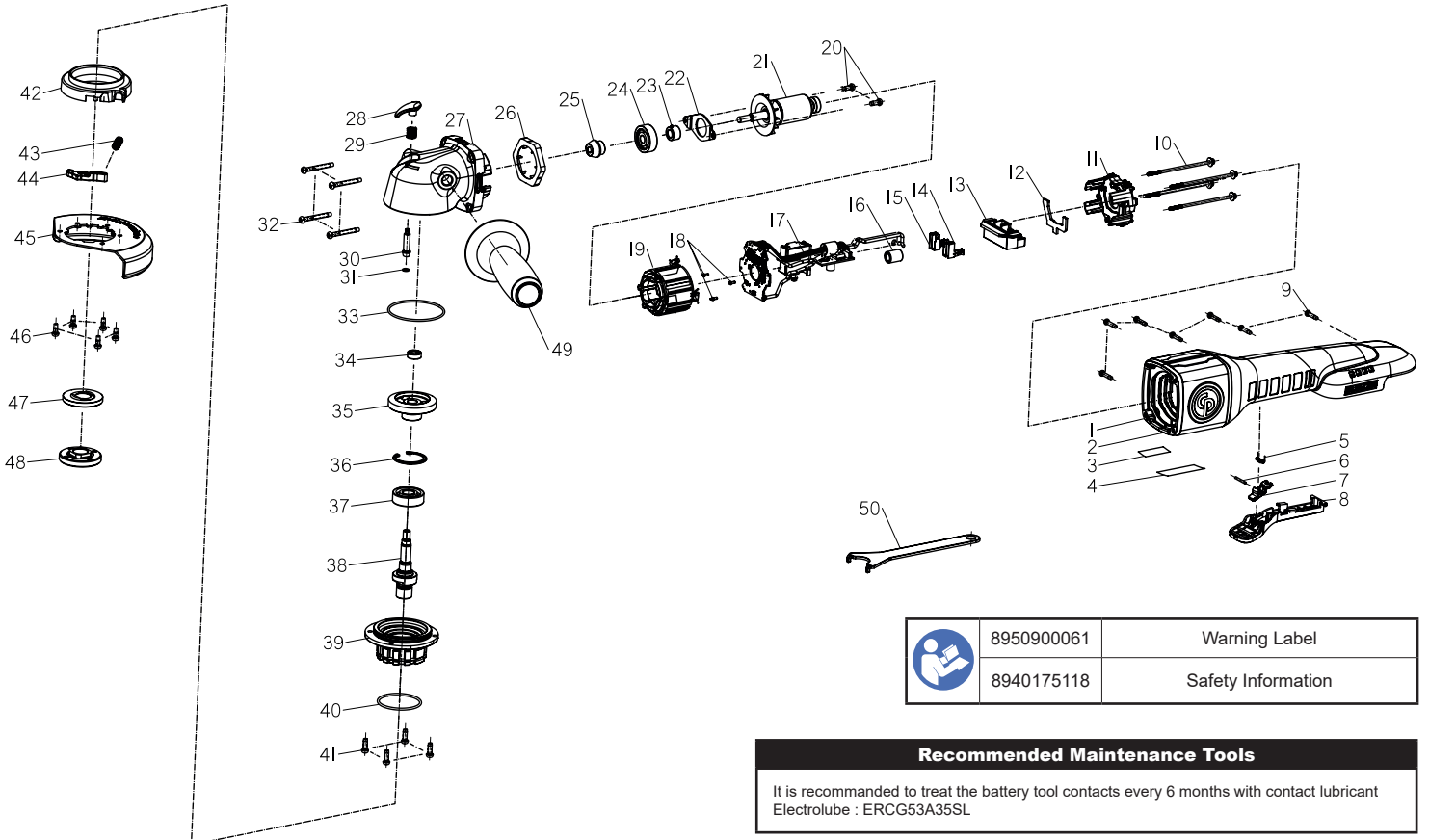




**Chicago  
Pneumatic**

**CP8345 & CP8350**  
Angle Grinder 4.5" & 5"  
Serie C



	8950900061	Warning Label
	8940175118	Safety Information

**Recommended Maintenance Tools**

It is recommended to treat the battery tool contacts every 6 months with contact lubricant Electrolube : ERCG53A35SL

Ref	CP Part No.	Description	Q'ty
<b>A</b>	<b>8940175445</b>	<b>Housing Assembly</b>	
1		Housing Cover	1
2		Housing Support	1
3		Warning Label	1
4		Nameplate	1
<b>B</b>	<b>8940175446</b>	<b>Paddle Switch Button assembly</b>	
5		Torsion Spring	1
6		Level Pin	1
7		Switch lock Level	1
8		Paddle Switch Button	1
<b>C</b>	<b>8940175447</b>	<b>Field, Circuit Board &amp; Contact Plate Assembly For CP8350</b>	
11		Motor End Cap	1
12		Silicon Film	1
14		Contact Plate "-VE"	1
15		Contact Plate "+VE"	1
16		Ferrite Bead	1
17		PCBA & Switch	1
18		M Screw M2x0.4	3
19		Motor Field	1
<b>D</b>	<b>8940175467</b>	<b>Field, Circuit Board &amp; Contact Plate Assembly For CP8345</b>	
		Included 11, 12, 14, 15, 17 18 & 19	
<b>E</b>	<b>8940175448</b>	<b>Armature Assembly</b>	
21		Motor Armature	1
22		Bearing Retainer	1
23		Brass Bush	1
24		Ball Bearing	1
25		Bevel Pinion	1
<b>F</b>	<b>8940175449</b>	<b>Gear Case Assembly</b>	
27		Gear Case	1
28		Spindle lock Button	1
29		Compressed Spring	1
30		Spindle lock Pin	1
31		O-Ring	1
<b>G</b>	<b>8940175450</b>	<b>Gear Coyer Assembl 4.5" for CP8345</b>	
33		O-Ring	1
34		Ball Bearing-Rear	1
35		Bevel Gear	1
36		Retainer Ring	1
37		Ball Bearing-Front	1
38-A		Spindle	1
39		Gear Cover	1

Ref	CP Part No.	Description	Q'ty
<b>H</b>	<b>8940175451</b>	<b>Gear Coyer Assembly 5" for CP8350</b>	
33		O-Ring	1
34		Bal I Bearing-Rear	1
35		Bevel Gear	1
36		Retainer Ring	1
37		Ball Bearing-Front	1
38-B		Spindle M4x2	1
39		Gear Cover	1
<b>I</b>	<b>8940175452</b>	<b>115mm Grinding Guard for CP8345</b>	
42		Guard Spacer	1
43		Compressed Spring	1
44		Tooless Level	1
45-A		Guard Hood 115mm	1
46		St Screw M4	5
<b>J</b>	<b>8940175453</b>	<b>125mm Grinding Guard for CP8350</b>	
42		Guard Spacer	1
43		Compressed Spring	1
44		Tooless Level	1
45-B		Guard Hood 115mm	1
46		St Screw M4	5
<b>K</b>	<b>8940175454</b>	<b>Flange Kit 4.5" for CP8345</b>	
		include 47 & 48	
<b>L</b>	<b>8940175455</b>	<b>Flange Kit 5" for CP8350</b>	
		include 47 & 48	

9	8940175456	St Screw, M3.5x 1.27	7
10	8940175457	M Screw, M3x0.5	4
13	8940175458	Contact Plate Holder	1
20	8940175459	Taptite Screw M4x0.7	2
26	8940175460	Motor Insulater Spacer	1
32	8940175461	St Screw M4	4
40	8940175462	O-Ring	1
41	8940175463	Taptite Screw M4	4
49	8940175464	Side Handle	1
50	8940175465	Spanner Wrench	1

**Recommended Accessories**

Battery	8940172262 CHARGER 20V EUROPE	
8940172261 20V 4,0Ah	8940172286 CHARGER 20V USA	
8940173636 20V 6,0Ah	8940172287 CHARGER 20V UK	
	8940172288 CHARGER 20V AUS	
	8940174305 CHARGER 20V KOREA	
	8940173638 DUAL CHARGER 12-20V	

Spare parts without part number are not sold separately  
Contact us at [www.cp.com](http://www.cp.com)

8940175466 Rev. 01  
28/11/2017